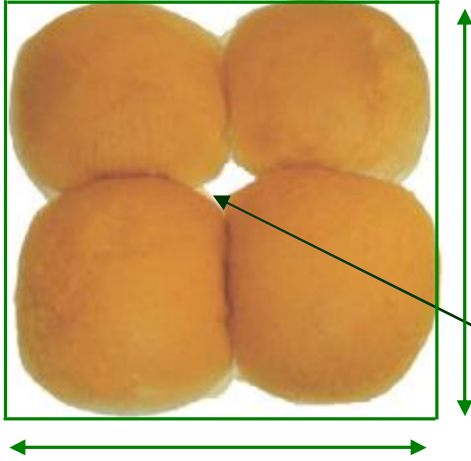


CLUSTER BUN MEASUREMENT

Top Measurements



Width: The width of the smallest rectangle that completely encloses the cluster bun. The width measurement is not affected by the orientation of the product on the conveyor belt.

Length: The length of the smallest rectangle that completely encloses the cluster bun. The length measurement is not affected by the orientation of the product on the conveyor belt.

Peak Height: Height of the highest point on the cluster bun surface.

Volume: Volume of the cluster bun. If weights are obtained from an external scale, cluster bun density can be calculated from volume and weight.

Hole Area: Area of the central hole.

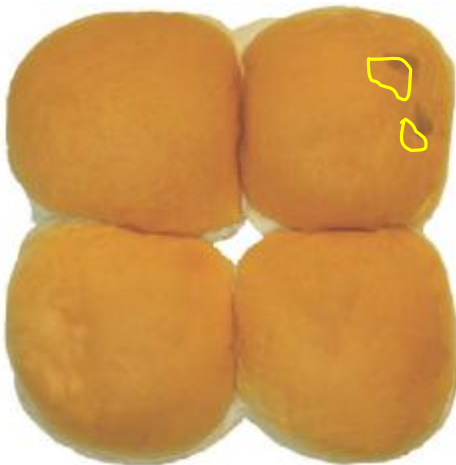


Color Measurements

Average Color: The bake average color of the entire top of the cluster bun, excluding the hole. A higher number means a lighter color.

Dark Area%: The percentage of the top covered by areas darker than a customer specified threshold. (e.g. burnt area)

Unseeded crown color: The average bake color of the crown surface, not covered by seeds, flour, or other light areas.



External Devices

Average Weight: Average weight of a sample of customer specified number of bun clusters, read from an optional scale.